

BENTLEY[®]

BATISTE

LUXURY VINYL TILE



BENTLEY®



Batiste



Contrasting, inverse, opposite - all words that effectively and positively support the conception of Bentley's **Batiste™**. Inspired by one of the finest weaves, the softness of a batiste fabric is an unusually unexpected source of inspiration for a hard surface flooring; yet is the perfect juxtaposition of strong performance and soft aesthetics.

With its woven appeal, Batiste offers up a visual that provides an understated canvas upon which a wide variety of finishes can reside, while at the same time functioning as an elegant solution to standard hard surface options. It's the perfect product to weave into the fabric of any project.



BATISTE BBAST, CHAMBRAY 801849, 18 IN X 36 IN - ASHLAR



BATISTE BBAST, LINEN 801846, 18 IN X 36 IN - ASHLAR



BATISTE BBAST, CAMBRIC 801840, 18 IN X 36 IN - ASHLAR

BENTLEY

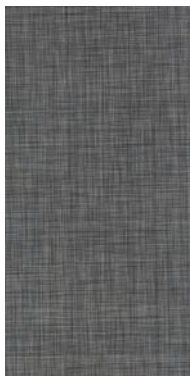


BATISTE BBAST, COTTON 801845, 18 IN X 36 IN - ASHLAR

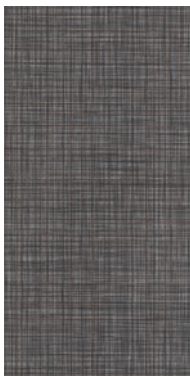
BATISTE™ - LUXURY VINYL TILE



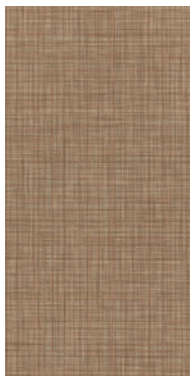
Cambric
801840



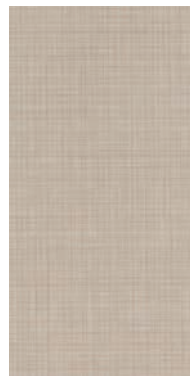
Weave
801841



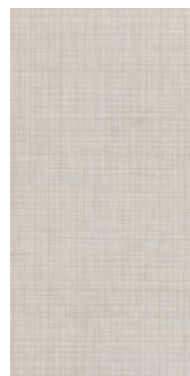
Thread
801842



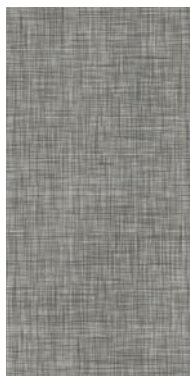
Greige
801843



Opaque
801844



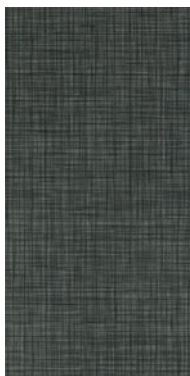
Cotton
801845



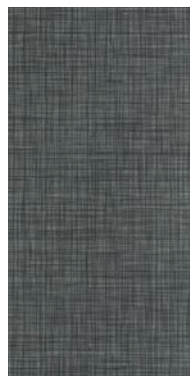
Linen
801846



Warp
801847



Weft
801848



Chambray
801849

Style Numbers

Tile Size

Gauge Total Thickness

Wear Layer Thickness

Install Type

LVT 2.5 mm (min. sq. ft. required)

BBAST0136U

18 in x 36 in

2.5 mm

20 mil

Direct Glue

LVT 5 mm

BBAST0136V

18 in x 36 in

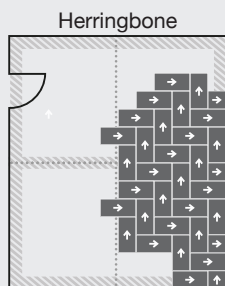
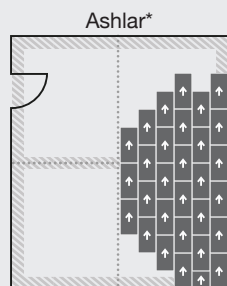
5 mm

20 mil

Direct Glue

For complete product specifications, visit bentleymills.com

Recommended Installation Methods



*For Random Ashlar installations, the stagger must not be less than 12 inches.

Colors may vary slightly between production runs. The printed images may not be an accurate reproduction of the product's actual colorways. We strive to offer an authentic representation, but images may vary according to press run and location lighting. These images are intended as a guide only. If you would like a sample of this product, please call Customer Care at 800.423.4709.



BATISTE BBAST, THREAD 801842, 18 IN X 36 IN - ASHLAR

Installation: All Bentley Luxury Vinyl Tile products must be installed by flooring installers who are professionally trained and experienced in current techniques and industry accepted standards for professional installation of luxury vinyl tile flooring. Please refer to the current issue of Bentley's Luxury Vinyl Tile (LVT) Installation Guidelines.

Adhesives: Bentley Luxury Vinyl Tile products must be installed with adhesives purchased through Bentley, and matched to requirements of Bentley for flooring material, site and project conditions. Please refer to the current issue of Bentley's Luxury Vinyl Tile (LVT) Installation Guidelines.

Maintenance: Please refer to the current issue of Bentley's Luxury Vinyl Tile (LVT) Maintenance Guidelines.

Warranty: Product warranted in accordance with the terms and conditions of Bentley's standard printed warranty in effect at time product is sold. All other warranties, including without limitation any implied warranties of merchantability or fitness for a particular purpose are hereby disclaimed. For complete warranty information, please refer to Bentley's Luxury Vinyl Tile (LVT) Warranty Terms. ©2025 Bentley Mills, Inc.

Need additional samples or information? 800.423.4709 | [bentleymills.com](https://www.bentleymills.com)

(BK-CP-0925)

BENTLEY

BENTLEY®

800.423.4709 | BENTLEYMILLS.COM

14641 E. DON JULIAN ROAD, CITY OF INDUSTRY, CA 91746