

Sustainability

Embracing our
responsibility
in commercial
flooring.

BENTLEY®

BENTLEY®

800.423.4709 | BENTLEYMILLS.COM

14641 EAST DON JULIAN ROAD, CITY OF INDUSTRY, CALIFORNIA 91746

BENTLEY®

DTLA, HWY 1, LAX, THE IE, THE LBC,
THE OC, THE 405 AND VENTURA

SOCAL COLLECTION

FAST TRACK

BENTLEY



DTLA, HWY 1, LAX, The IE, The LBC, The OC, The 405 and Ventura

Southern California has its own kind of motion, like sunlight and shadow on the 405 and the hum of neighborhoods always in flux. This is the **SoCal Collection**.

SoCal is California at ease: open, fluid, effortlessly in motion. Eight styles, each a place and a mindset—**DTLA** has a quiet geometry, **LAX** has takeoff energy, **The 405** reflects the pulse, **The LBC** possesses an easy edge, **The OC** portrays polished calm, **The IE** brings on the grit, **Ventura** holds a coastal stillness, and **HWY 1** brings a wash of light.

Grounded yet luminous palette (asphalt, ocean, air). Textures that feel intentional yet lived-in. Sustainable, California-made, and all available in Fast Track.

Bentley SoCal Collection. Relaxed. Refined. Ready when you are.



LAX 6LXT4, KHAKI 407964, 18 IN X 36 IN - MONOLITHIC



THE LBC 6TLT4, KHAKI 407964, 24 IN X 24 IN - BRICK



VENTURA 6VET4, MOONSTONE 407961, 18 IN X 36 IN - MONOLITHIC



DTLA 6DATA, DOWNY 407957, 18 IN X 36 IN - MONOLITHIC



THE 405 6THT4, TOASTED 407963, 18 IN X 36 IN - MONOLITHIC



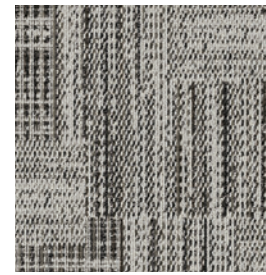
THE OC 6OCT4, LODEN 407967, 18 IN X 36 IN - MONOLITHIC



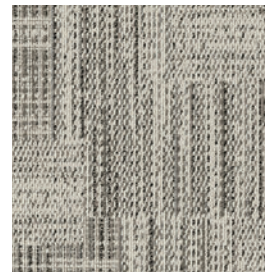
THE IE 6IET4, STEELY 407960, 18 IN X 36 IN - MONOLITHIC

DTLA

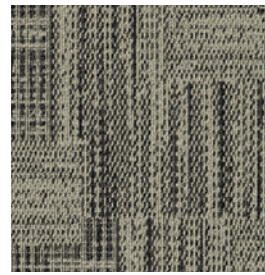
FAST TRACK
QUICK SHIP



Icicle 407956



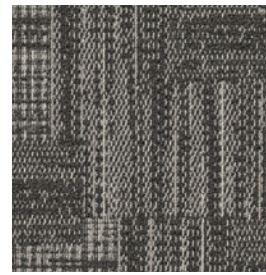
Downy 407957



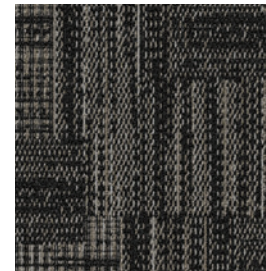
Column 407958



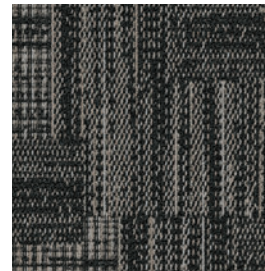
Morel 407959



Steely 407960



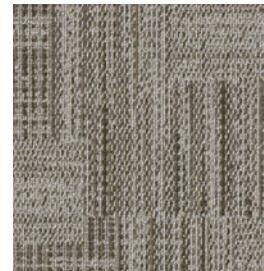
Moonstone 407961



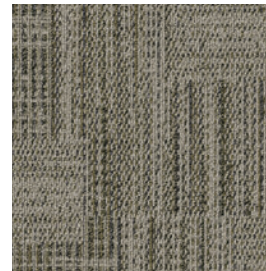
North Star 407962



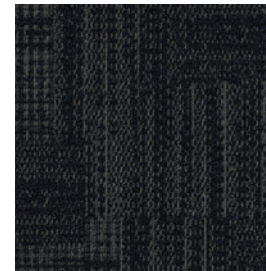
Toasted 407963



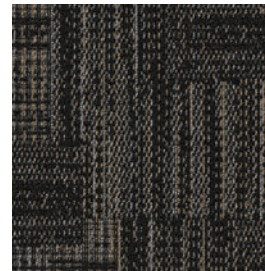
Khaki 407964



Loden 407967



Inkwell 407969



Black Opal 407970

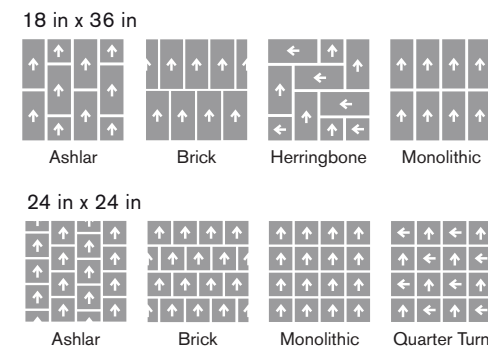


Style Number 6DAT4
Product Construction Tufted Level Loop
Fiber Bentley Premium™ Nylon
Dye Method Solution Dyed

For complete product specifications, visit bentleymills.com

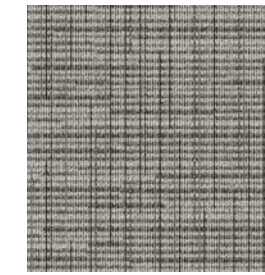
PVC-Free Backing Options	Size Options
AFIRMA II™ Hardback Tile	18 in x 36 in, 24 in x 24 in
NexStep® Cushion Tile	18 in x 36 in, 24 in x 24 in
LuxFelt™ Cushion Tile	18 in x 36 in, 24 in x 24 in
High PerformancePC Broadloom	12 ft

Recommended Carpet Tile Installation Methods



HWY 1

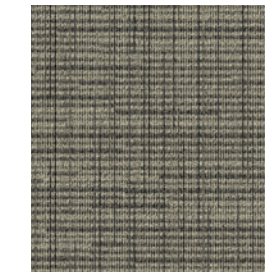
FAST TRACK
QUICK SHIP



Icicle 407956



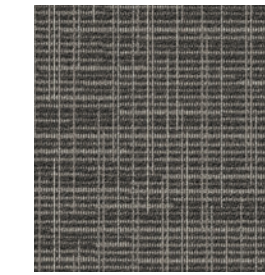
Downy 407957



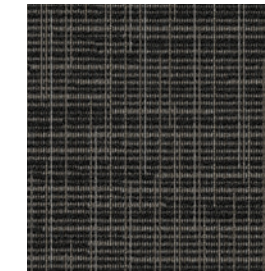
Column 407958



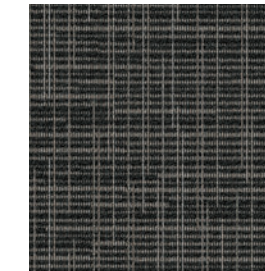
Morel 407959



Steely 407960



Moonstone 407961



North Star 407962



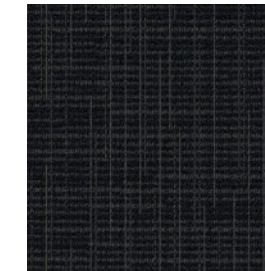
Toasted 407963



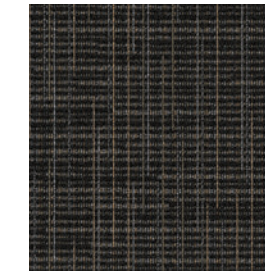
Khaki 407964



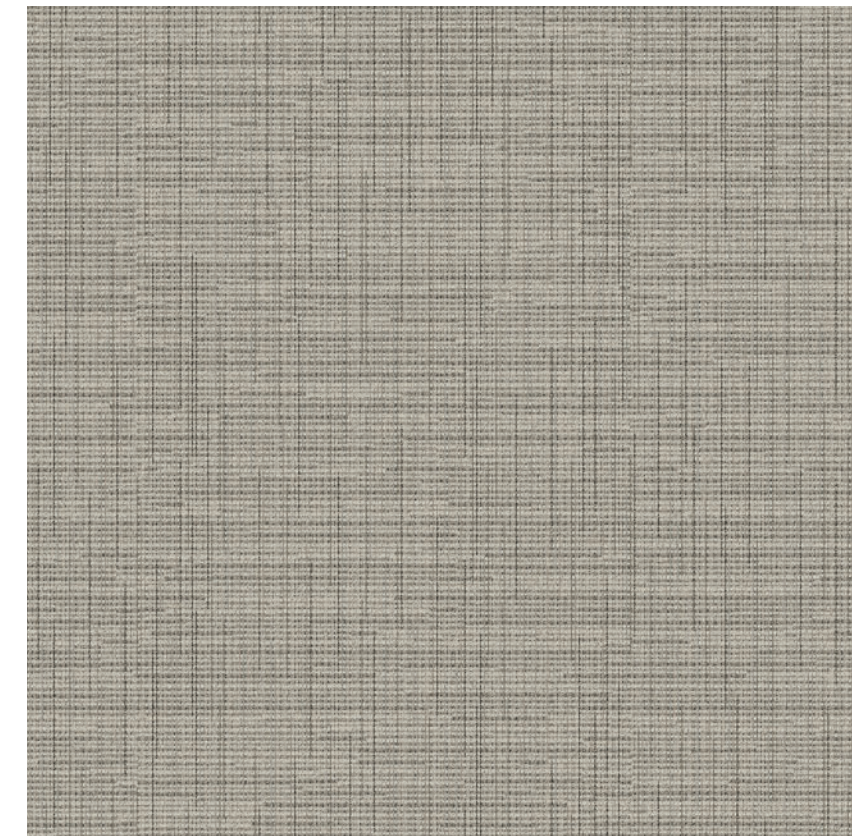
Loden 407967



Inkwell 407969



Black Opal 407970

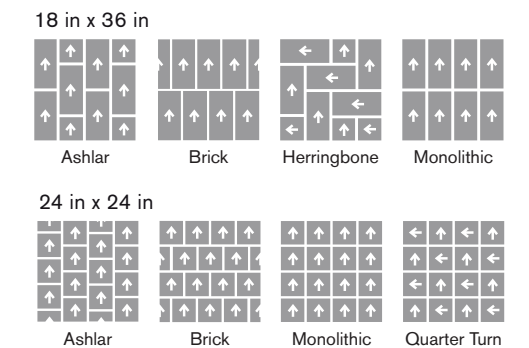


Style Number 6HWT4
Product Construction Tufted Level Loop
Fiber Bentley Premium™ Nylon
Dye Method Solution Dyed

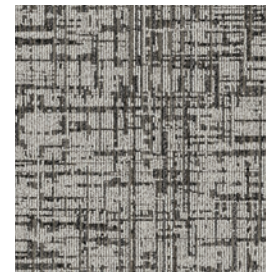
For complete product specifications, visit bentleymills.com

PVC-Free Backing Options	Size Options
AFIRMA II™ Hardback Tile	18 in x 36 in, 24 in x 24 in
NexStep® Cushion Tile	18 in x 36 in, 24 in x 24 in
LuxFelt™ Cushion Tile	18 in x 36 in, 24 in x 24 in
High PerformancePC Broadloom	12 ft
EliteFlex™ Cushion	6ft

Recommended Carpet Tile Installation Methods



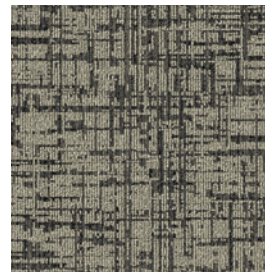
LAX



Icicle 407956



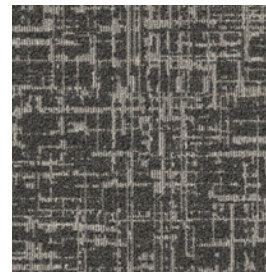
Downy 407957



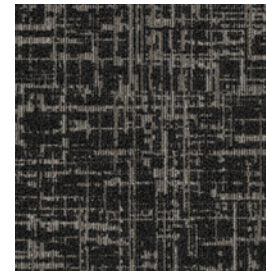
Column 407958



Morel 407959



Steely 407960



Moonstone 407961



North Star 407962



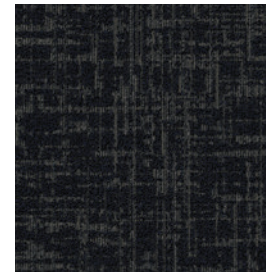
Toasted 407963



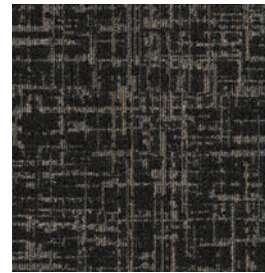
Khaki 407964



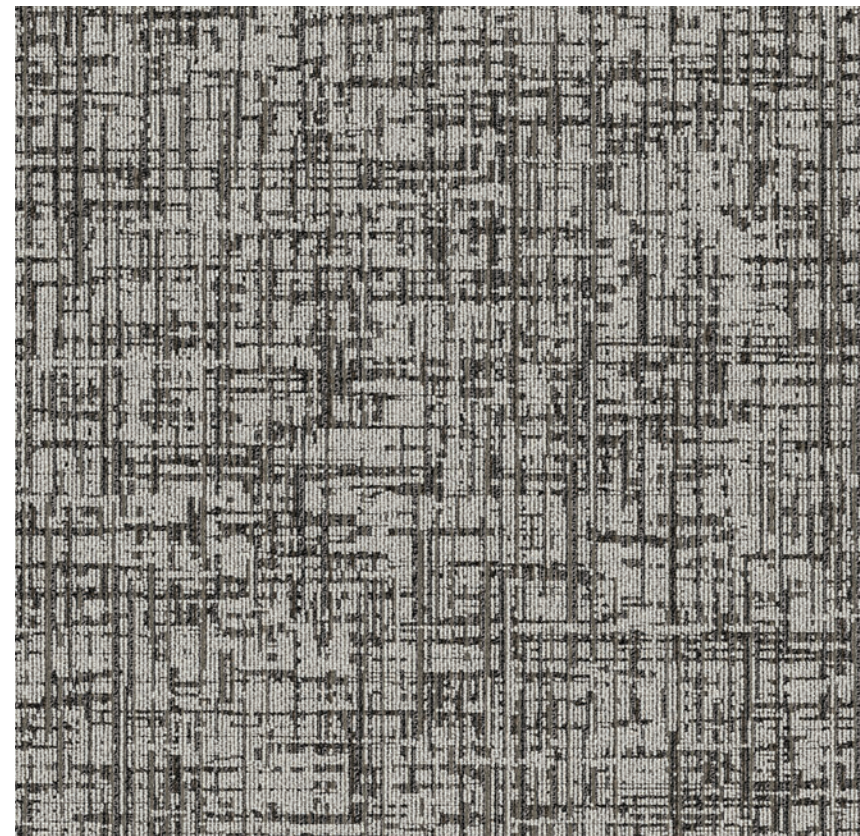
Loden 407967



Inkwell 407969



Black Opal 407970

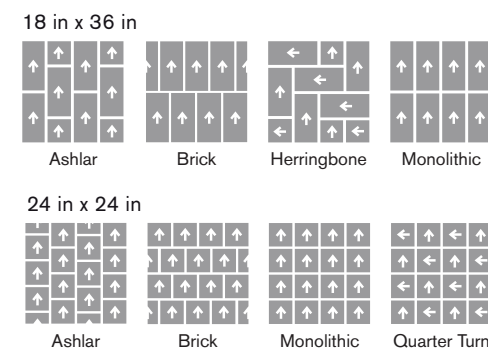


Style Number 6LXT4
Product Construction Tufted Level Loop
Fiber Bentley Premium™ Nylon
Dye Method Solution Dyed

For complete product specifications, visit bentleymills.com

PVC-Free Backing Options	Size Options
AFIRMA II™ Hardback Tile	18 in x 36 in, 24 in x 24 in
NexStep® Cushion Tile	18 in x 36 in, 24 in x 24 in
LuxFelt™ Cushion Tile	18 in x 36 in, 24 in x 24 in
High PerformancePC Broadloom	12 ft
EliteFlex™ Cushion	6ft

Recommended Carpet Tile Installation Methods



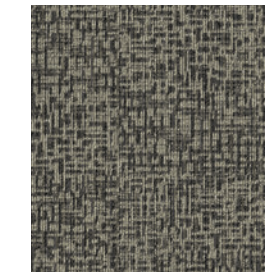
THE LBC



Icicle 407956



Downy 407957



Column 407958



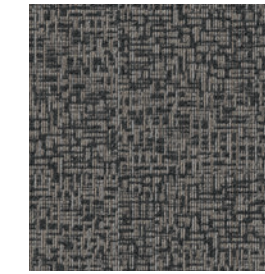
Morel 407959



Steely 407960



Moonstone 407961



North Star 407962



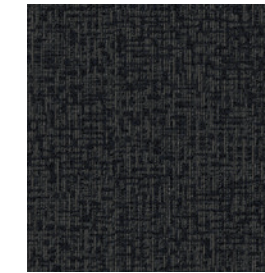
Toasted 407963



Khaki 407964



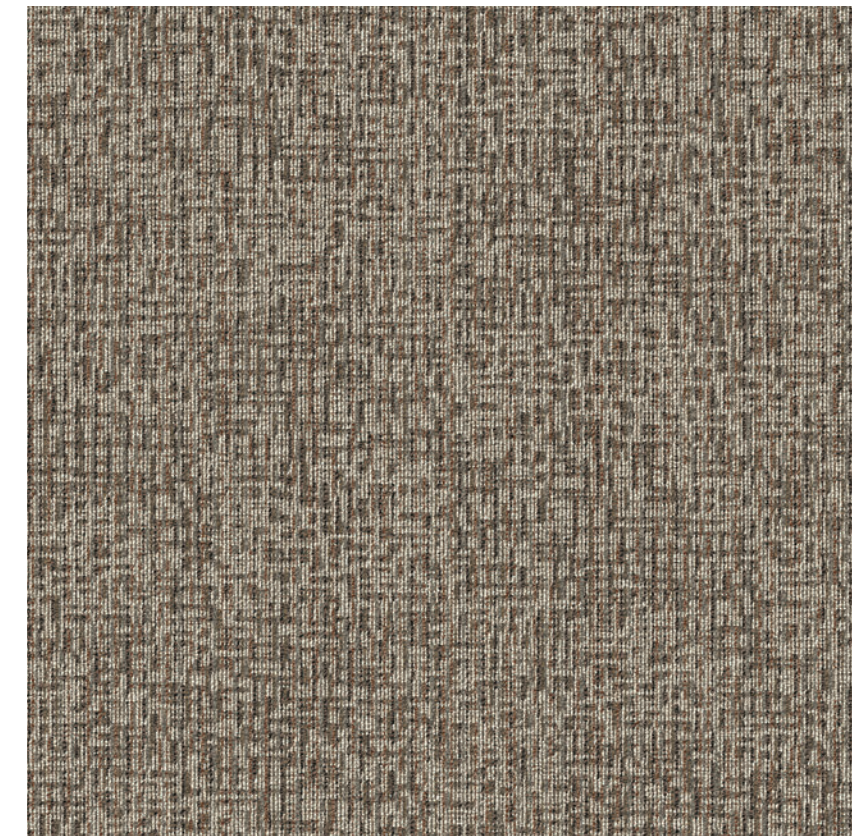
Loden 407967



Inkwell 407969



Black Opal 407970

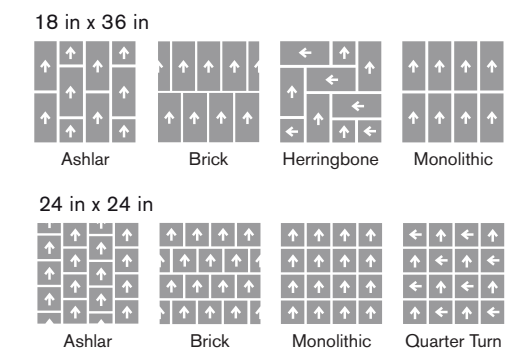


Style Number 6TLT4
Product Construction Tufted Level Loop
Fiber Bentley Premium™ Nylon
Dye Method Solution Dyed

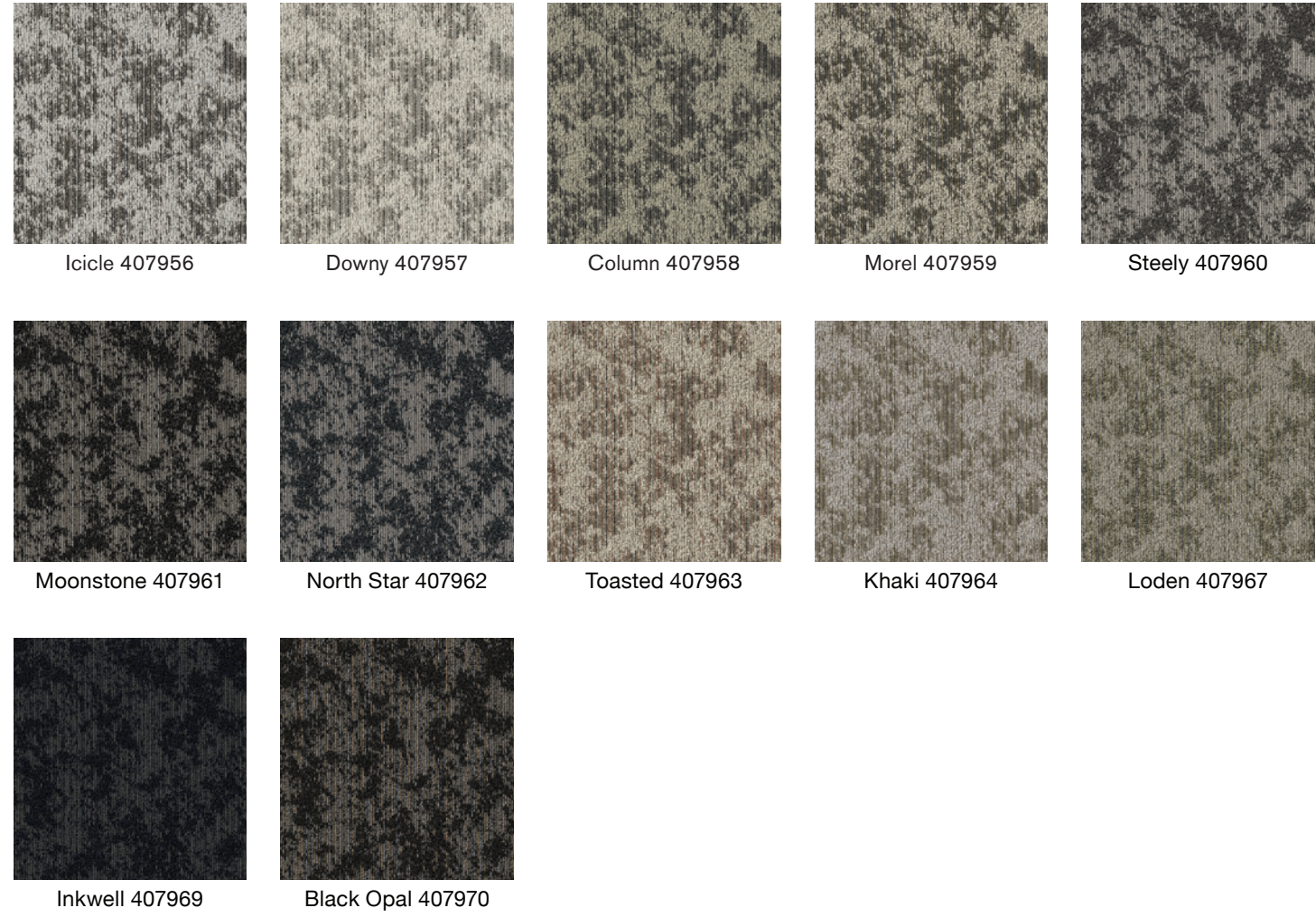
For complete product specifications, visit bentleymills.com

PVC-Free Backing Options	Size Options
AFIRMA II™ Hardback Tile	18 in x 36 in, 24 in x 24 in
NexStep® Cushion Tile	18 in x 36 in, 24 in x 24 in
LuxFelt™ Cushion Tile	18 in x 36 in, 24 in x 24 in
High PerformancePC Broadloom	12 ft
EliteFlex™ Cushion	6ft

Recommended Carpet Tile Installation Methods



THE IE



Icicle 407956 Downy 407957 Column 407958 Morel 407959 Steely 407960

Moonstone 407961 North Star 407962 Toasted 407963 Khaki 407964 Loden 407967

Inkwell 407969 Black Opal 407970

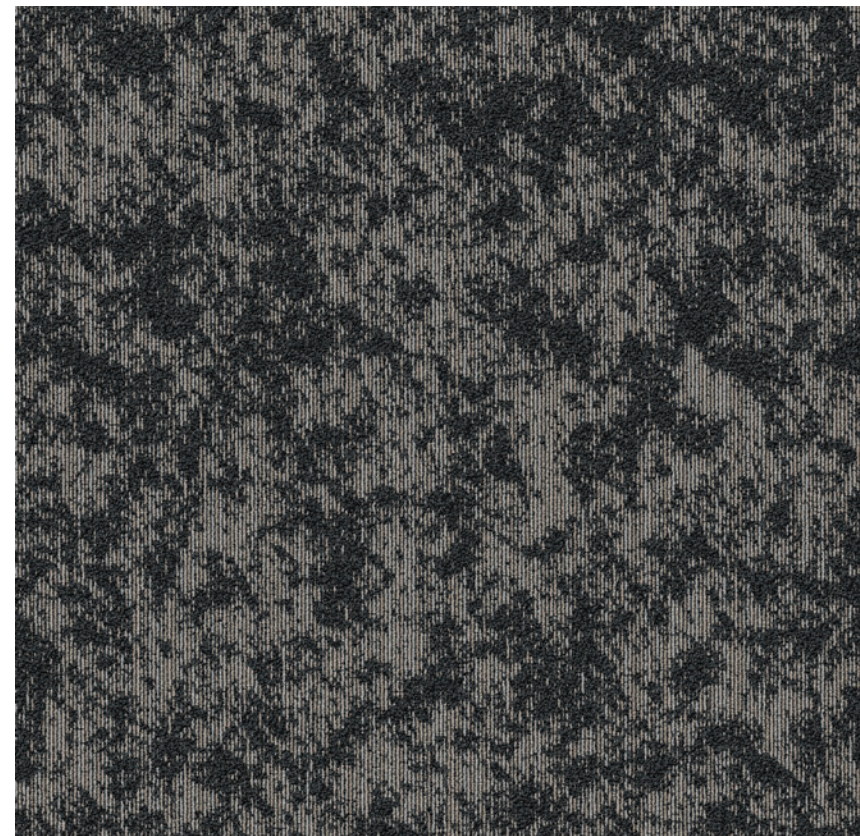
THE OC



Icicle 407956 Downy 407957 Column 407958 Morel 407959 Steely 407960

Moonstone 407961 North Star 407962 Toasted 407963 Khaki 407964 Loden 407967

Inkwell 407969 Black Opal 407970

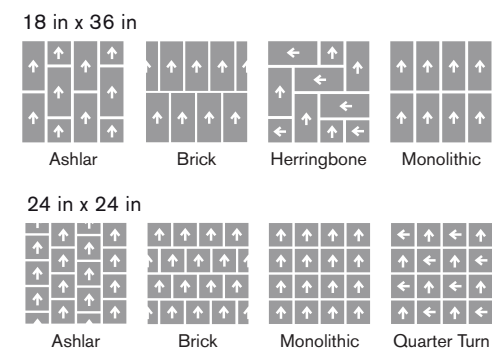


Style Number 6IET4
Product Construction Tufted Level Loop
Fiber Bentley Premium™ Nylon
Dye Method Solution Dyed

For complete product specifications, visit bentleymills.com

PVC-Free Backing Options	Size Options
AFIRMA II™ Hardback Tile	18 in x 36 in, 24 in x 24 in
NexStep® Cushion Tile	18 in x 36 in, 24 in x 24 in
LuxFelt™ Cushion Tile	18 in x 36 in, 24 in x 24 in
High PerformancePC Broadloom	12 ft
EliteFlex™ Cushion	6ft

Recommended Carpet Tile Installation Methods

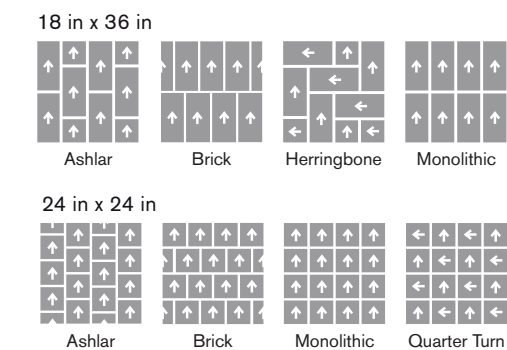


Style Number 6OCT4
Product Construction Tufted Level Loop
Fiber Bentley Premium™ Nylon
Dye Method Solution Dyed

For complete product specifications, visit bentleymills.com

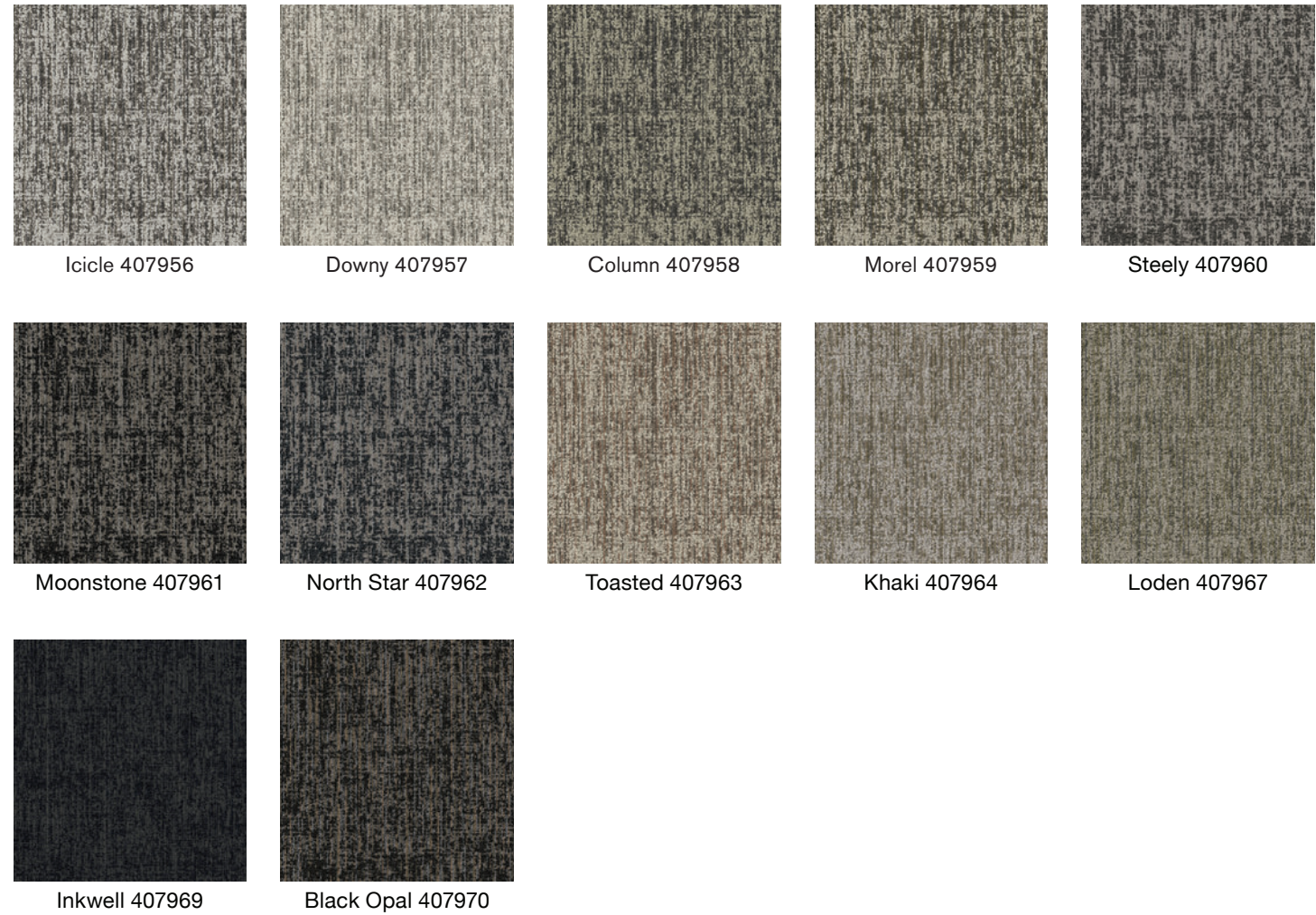
PVC-Free Backing Options	Size Options
AFIRMA II™ Hardback Tile	18 in x 36 in, 24 in x 24 in
NexStep® Cushion Tile	18 in x 36 in, 24 in x 24 in
LuxFelt™ Cushion Tile	18 in x 36 in, 24 in x 24 in
High PerformancePC Broadloom	12 ft
EliteFlex™ Cushion	6ft

Recommended Carpet Tile Installation Methods



THE 405

FAST TRACK
QUICK SHIP



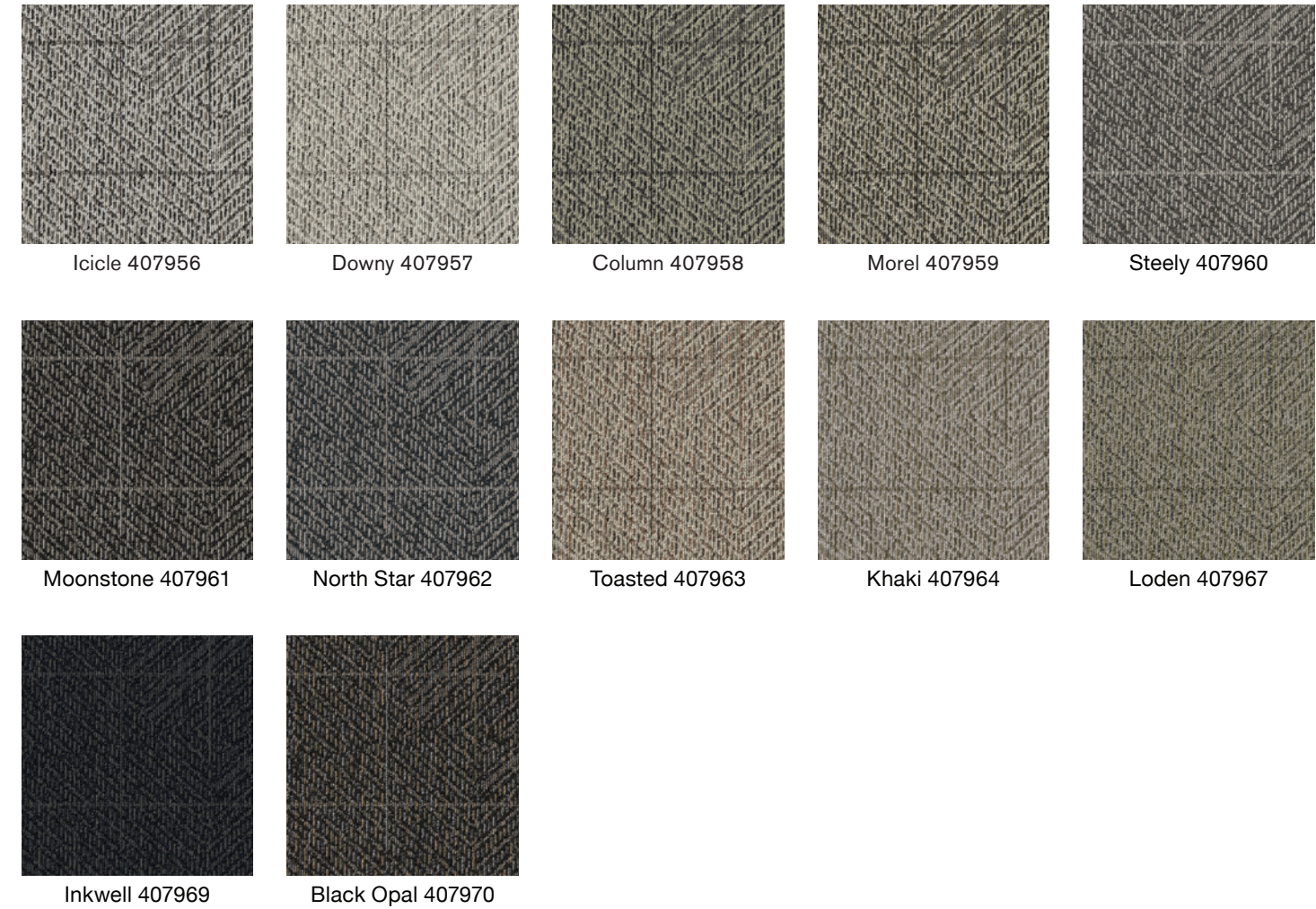
Icicle 407956 Downy 407957 Column 407958 Morel 407959 Steely 407960

Moonstone 407961 North Star 407962 Toasted 407963 Khaki 407964 Loden 407967

Inkwell 407969 Black Opal 407970

VENTURA

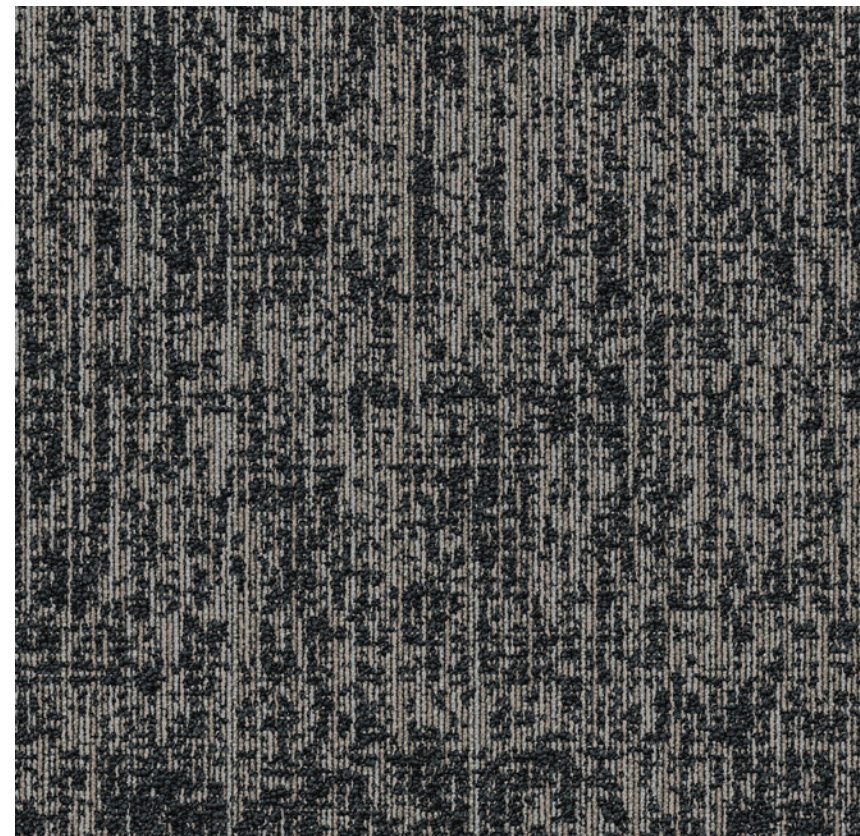
FAST TRACK
QUICK SHIP



Icicle 407956 Downy 407957 Column 407958 Morel 407959 Steely 407960

Moonstone 407961 North Star 407962 Toasted 407963 Khaki 407964 Loden 407967

Inkwell 407969 Black Opal 407970

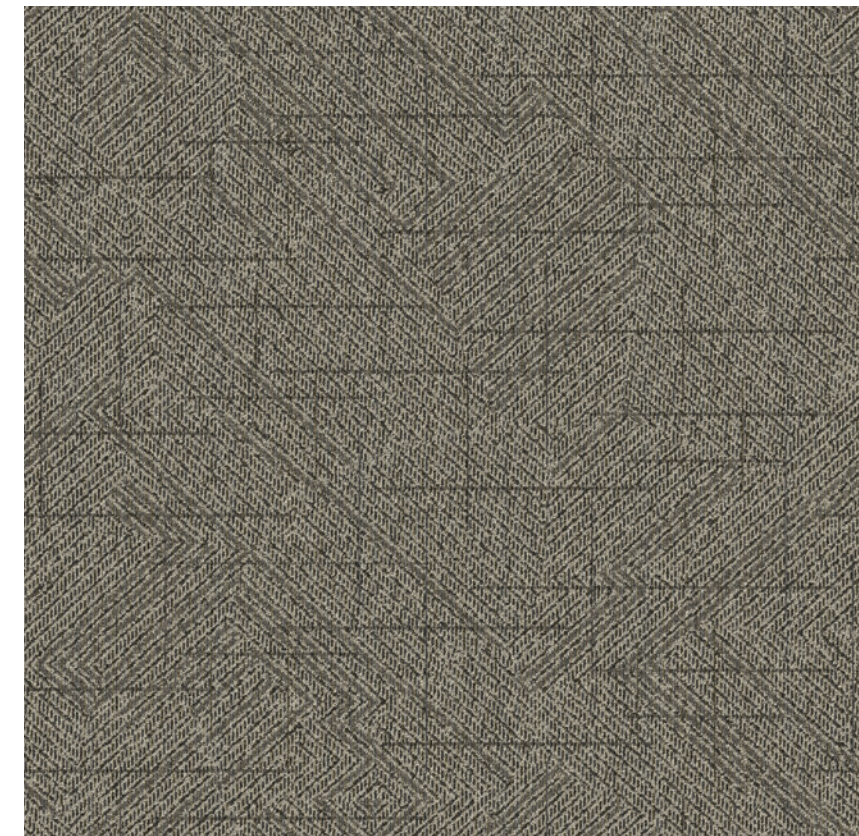
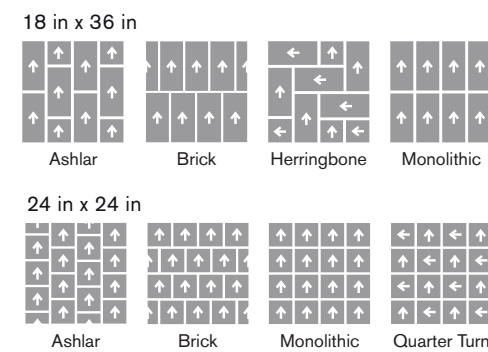


Style Number 6THT4
Product Construction Tufted Level Loop
Fiber Bentley Premium™ Nylon
Dye Method Solution Dyed

For complete product specifications, visit bentleymills.com

PVC-Free Backing Options	Size Options
AFIRMA II™ Hardback Tile	18 in x 36 in, 24 in x 24 in
NexStep® Cushion Tile	18 in x 36 in, 24 in x 24 in
LuxFelt™ Cushion Tile	18 in x 36 in, 24 in x 24 in
High PerformancePC Broadloom	12 ft
EliteFlex™ Cushion	6ft

Recommended Carpet Tile Installation Methods

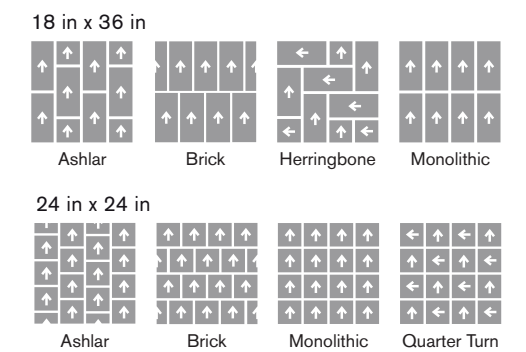


Style Number 6VET4
Product Construction Tufted Level Loop
Fiber Bentley Premium™ Nylon
Dye Method Solution Dyed

For complete product specifications, visit bentleymills.com

PVC-Free Backing Options	Size Options
AFIRMA II™ Hardback Tile	18 in x 36 in, 24 in x 24 in
NexStep® Cushion Tile	18 in x 36 in, 24 in x 24 in
LuxFelt™ Cushion Tile	18 in x 36 in, 24 in x 24 in
High PerformancePC Broadloom	12 ft
EliteFlex™ Cushion	6ft

Recommended Carpet Tile Installation Methods





HWY 1 6HWT4, KHAKI 407964, 18 IN X 36 IN - BRICK

DTLA 6DAT4, KHAKI 407964, 18 IN X 36 IN - BRICK

Fast Track is Bentley's quick-ship program designed for maximum flexibility and expedited delivery. Orders of 1500 square yards or less will be ready to ship within 10 business days of order. For orders exceeding 1500 square yards, please contact our Customer Care Concierge for availability.

The printed images may not be an accurate reproduction of the product's actual colorways. We strive to offer an authentic representation, but images may vary according to press run and location lighting. These images are intended as a guide only. If you would like a sample of this product, please call Customer Care at 800.423.4709.

Bentley's carpet products are manufactured in our California mill, a LEED Existing Buildings: Operations and Maintenance Gold certified facility. Product Certifications and Declarations can be found under the Sustainability section of our website. For more information, including additional backing options, detailed specifications, and warranties, please visit bentleymills.com.

Carpet specifications and components are subject to normal manufacturing tolerances and may change without notice. Product warranted in accordance with the terms and conditions of Bentley's standard printed warranty in effect at time product is sold. All other warranties, including without limitation any implied warranties of merchantability or fitness for a particular purpose, are hereby disclaimed. Made in USA. Warning: unauthorized reproduction of this carpet design constitutes copyright infringement.
©2026 Bentley Mills, Inc.

Need additional samples or information? 800.423.4709 | bentleymills.com
(BK-CP-0126)

BENTLEY®

LOCATION

Made in California under the most stringent environmental regulations in the nation

In a **LEED-EB Gold Certified** Carpet Mill, the first manufacturing facility in the world to achieve LEED-EB Certification

Using **100% Renewable Energy**

HEALTH AND WELLNESS

Bentley's carpet is **PFAS free, Red List free, Antimicrobial free,** and has always been **PVC free,** since day one.

TRANSPARENCY

Cradle to Cradle®

NSF 140

CRI Green Label Plus certified carpet and adhesives meet CDPH 01350 for low emitting materials

Declare Label—Red List Free

3rd Party Verified to 100 ppm

Health Product Declaration (HPD)

3rd Party Verified to 100 ppm

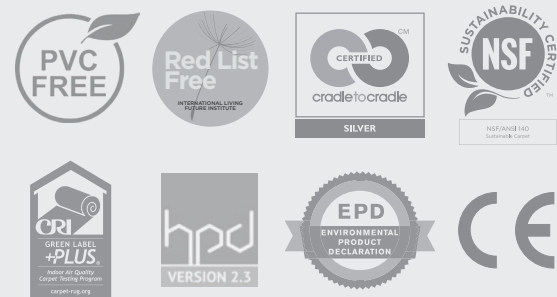
Environmental Product Declaration (EPD)

3rd Party Verified Type III, Product Specific with GWP < 6 kg CO₂e/m²

CIRCULARITY

We're reshaping our supply chain to **recover waste** and include circular materials in every carpet product we make. We are reducing our dependence on virgin resources such as nylon and calcium carbonate, and turning waste and emissions into valuable resources, like **capturing and utilizing CO₂** as a raw material.

And with our **FulFill™** Carpet Reclamation program, we take back all carpet—any material, from any manufacturer.



For more info, visit bentleymills.com/responsibility